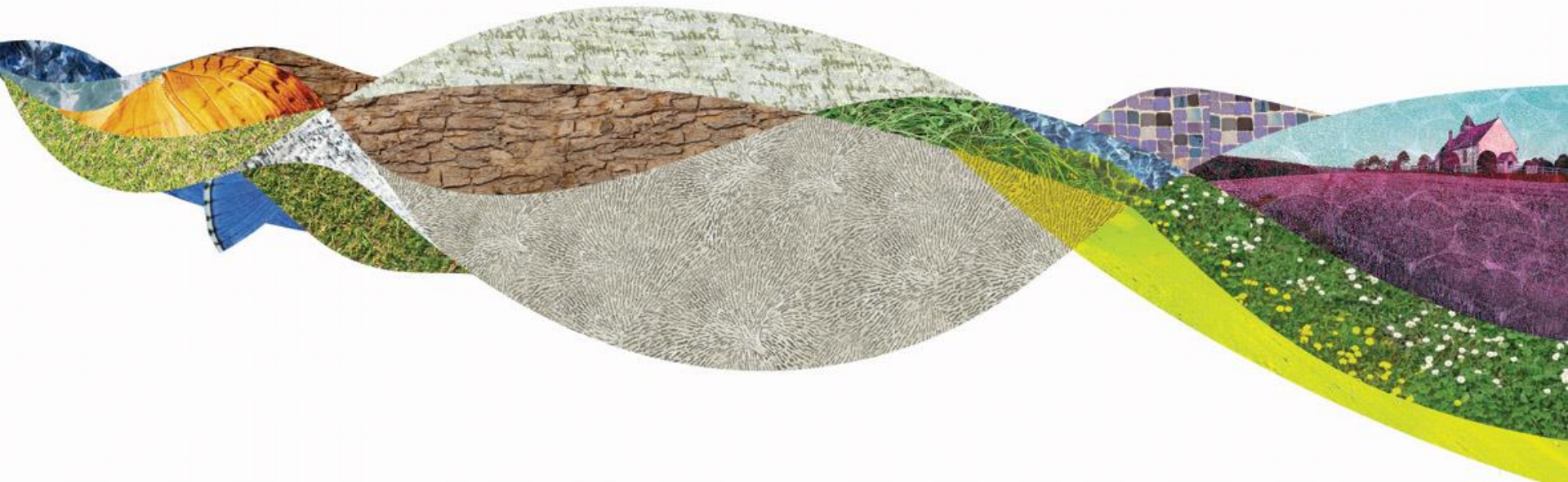


Planning in the National Park

A role for Parish Councils

Chris Paterson

Community Lead



Contents

- The challenge
- How can we ensure high quality decision making
- A role for Parish Councils / Town Councils / Community
- Some success
- Key dates and next steps



It's big.....

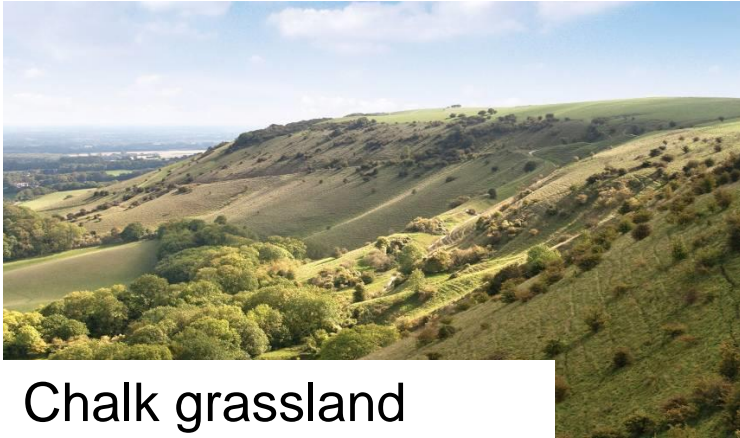


Complex Planning Policy

- 8th largest planning authority in Britain
- Covering 15 local planning authority areas
- A mixture of planning policies
- Policy from 2006 – 2015
- A challenge for Development Management
- Still having success.....
- Visit <http://southdowns.gov.uk/planning> for information about planning applications.



A varied landscape..



Chalk grassland



Heathland



Farmed

© Val Carver



Woodland

© Val Carver



Protecting our special qualities

1 Diverse, inspirational landscapes and breathtaking views



4 An environment shaped by centuries of farming and embracing new enterprise



2 A rich variety of wildlife and habitats including rare and internationally important species



5 Great opportunities for recreational activities and learning experiences



3 Tranquil and unspoilt places



6 Well-conserved historical features and a rich cultural heritage

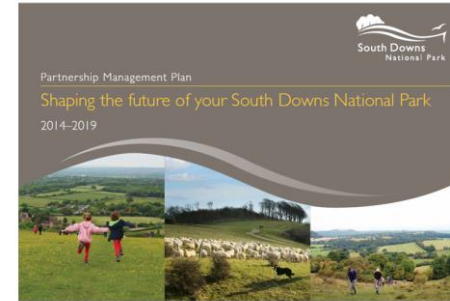


7 Distinctive towns and villages, and communities with real pride in their area



Ensuring high quality decisions

- Established the Special Qualities to focus our decision making
- Partnership Management Plan – material consideration
- Special relationship with our partners – agency agreement
- South Downs Local Plan – one policy document
- Need local flavour and input
- Need input from community, town and parish councils



A role for Town and Parish Councils

- Important that the 176 parish / towns are involved in decision making
Consulteeaccess@southdowns.gov.uk
- Engage in the preparation of the South Downs Local Plan (more info on key dates)
- Preparing their own Local Plan (Neighbourhood Planning)
- Preparing an alternative Community Led Plan to provide local intelligence
- Getting the community involved <http://southdowns.gov.uk/care-for/have-your-say/>



A role for Town and Parish Councils

- Engage in the preparation of the South Downs Local Plan (more info on key dates)
 - Town and Parish Councils are valued partners
 - Over 60 responses from town and parish at issues and options
 - We are presenting our preferred options [NOW](https://www.southdowns.gov.uk/planning/planning-policy/national-park-local-plan/local-plan-preferred-options-public-consultation/)
<https://www.southdowns.gov.uk/planning/planning-policy/national-park-local-plan/local-plan-preferred-options-public-consultation/>
 - Include housing numbers and proposed allocations
 - 4596 proposed housing requirement



A role for Town and Parish Councils

- Engage in the preparation of the South Downs Local Plan (more info on key dates)
 - 2 Sept – 28 October to respond
 - West Sussex Parish Council workshop – 16/09
 - Park Wide drop in 12/09
 - West Sussex drop in session – NOW

 - Respond online
 - Consider how the proposed policies will affect decision making in the future and tell us what you think (good and bad)

 - Gives Singleton a chance to influence future planning matters



A role for Town and Parish Councils

- What's in the plan for Singleton?
 - A Settlement Policy Boundary
 - NO housing requirement
 - Series of policies to determine future planning applications
 - Core Policy SD4/ DS:The Dip Slope
 - Strategic Policy SD13: International Sites
 - Strategic Policy SD6 Design
 - Strategic Policy SD7: Safeguarding Views
 - Strategic Policy SD9: Dark Night Skies



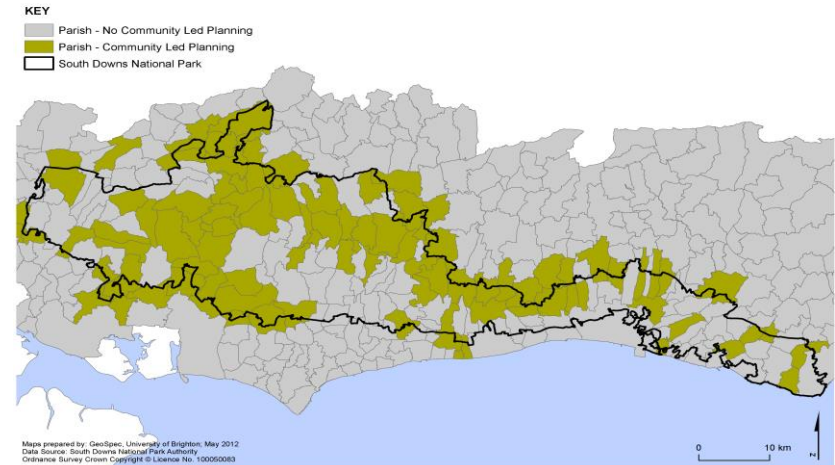
A role for Town and Parish Councils

- Preparing their own Local Plan (Neighbourhood Planning)
 - The new community led plan
 - Community determine the location, type of required development
 - Increased power – increased responsibility
 - Is it relevant where you have no requirement (want to deliver more)
 - Funding and support available
 - <http://southdowns.gov.uk/planning/planning-policy/neighbourhood-planning/>



A role for Town and Parish Councils

- Preparing an alternative Community Led Plan to provide local intelligence
 - Neighbourhood plans are not required / relevant in some circumstances
 - There are lots of other plans and parishes all over the park are preparing them
 - Singleton VDS could be adopted by SDNPA
 - SDNPA encouraging parishes to use alternative plans where NDP's are not appropriate (toolkit)



Some success....



Appeal Decision

Inquiry held on 9 – 11 and 30 September 2014, and 1 October 2014

Site visits made on 11, 28 and 29 September 2014

by **A U Ghafoor BSc (Hons) MA MRTPI**

an Inspector appointed by the Secretary of State for Communities and Local Government

Decision date: 30 October 2014

Appeal Ref: APP/Y9507/A/14/2218678

Land north of Sussex Road Petersfield Hampshire GU31 4JZ



Appeal Decision

Hearing held on 29 May 2013

Site Visits made on 29 & 30 May 2013

by **D R Cullingford BA MPhil MRTPI**

an Inspector appointed by the Secretary of State for Communities and Local Government

Decision date: 22 July 2013

Appeal Ref: APP/Y9507/A/13/2190512

Land to the south of 63-65 Inwood Road, Liss, Hampshire, GU33 7LY



Some success.....

Inwood Road, Liss

- Decision will be based on whether the scheme would properly reflect local character, reinforce local distinctiveness or respond to this opportunity to improve the character and quality of this place as indicated in the Framework and as guided by the Design Brief, the **Village Design Statement**

Under the hill, Selborne (Barnfield)

- All **development will be required to take account of village design statements** where they exist . The ***Selborne Village Design Statement*** has a section dealing with open spaces within the village. This mentions Barn Field, describing it as an open space within the settlement that is an important feature which affords views through the village to the wider landscape beyond. The Design Guidelines seek to maintain the existing open spaces that are identified in the SVDS.



Some success.....

Burlands Field, Selborne

- From the evidence before me it is clear that the local community in Selborne has been proactive in preparing documents to **assist in planning for its future development**, with the **Selborne Village Community Plan** and the **Local Landscape Character Assessment** having been adopted by the Parish Council; and the **VDS** already referred to, being adopted by EHDC as SPG.



Alciston
improving
communications

Wisborough green
improving access



Key Dates and next steps.....

South Downs Local Plan

- Parish & Community to establish their preference for Neighbourhood Plan
- SDNPA require NDPs to be at pre submission version Feb 2016



Contact...



www.southdowns.gov.uk



chris.paterson@southdowns.gov.uk



01730 819286



South Downs Centre, North Street, Midhurst, West
Sussex, GU29 9DH

