

# The Valley Diary

Binderton ~ Charlton ~ Chilgrove ~ East Dean ~ Singleton ~ West Dean

[www.thevalleydiary.org](http://www.thevalleydiary.org)

More of what you're looking for. Locally.

January 2025

# HAPPY NEW YEAR!



Sussex  
Police & Crime  
Commissioner

Ensuring we are all  
Safer in Sussex

**The ground-breaking national policing and retail Pegasus Partnership funded by 15 of the country's top retailers has created opportunities for information and intelligence sharing between retailers and police.**

In just seven months it has led to the arrest of 93 members of 28 organised crime gangs who are estimated to be behind more than £4 million worth of shop thefts. It has also secured numerous convictions, with more to come, and seen five people deported. Importantly, nearly 230 previously unknown offenders and 70 vehicles involved in retail crime, have been identified.



# LADIES NIGHT

## Star and Garter

East Dean  
Tuesday 14th  
January, 7pm  
All Welcome!

With online retail crime becoming a growing threat to retailers, we now need to ensure our virtual shopping spaces are also provided the same protection. As well as stealing in shops, organised crime gangs can operate digitally, through the sale of stolen and counterfeit goods, particularly in alternative marketplaces. Offenders are able to hide behind fake profiles and accounts causing great harm to businesses and potentially the public, as the goods aren't always the 'real deal'. Social media and re-seller platforms have a responsibility to their users to ensure the sales taking place on their websites are legitimate and safe. Similarly, customers need to make sure they understand what they are purchasing online.

It can be difficult to identify stolen goods. However, signs to look out for may include: extremely low prices; no detail on the listing; electrical goods being sold that are password locked; the seller has no reviews; the seller cannot provide proof of ownership; the seller has crossed out serial numbers or barcodes. It's quite simple really - if you're in any doubt, don't purchase the item.

**Katy Bourne, Sussex Police & Crime Commissioner**

Mark Astley, MNAEA  
Director

Curious about the  
**value** of your property?

## JACKSON-STOPS

PROPERTY EXPERTS SINCE 1910

To book your free, no obligation  
market appraisal contact Mark Astley  
on **01243 786316**.

[chichester@jackson-stops.co.uk](mailto:chichester@jackson-stops.co.uk)  
[jackson-stops.co.uk](http://jackson-stops.co.uk)

## The Home Buying Experts for West Sussex and Hampshire



Established in 2003 - and with over 35 years' experience, enviable contacts, and in-depth market knowledge - we offer our clients discerning independent advice when acting as their dedicated property buying agent. When it comes to property acquisitions in West Sussex and Hampshire, our expertise and personalised service set us apart.

**pa** Property Acquisitions

E: [info@propertyacquisitions.co.uk](mailto:info@propertyacquisitions.co.uk)  
T: +44 (0)1243 531133

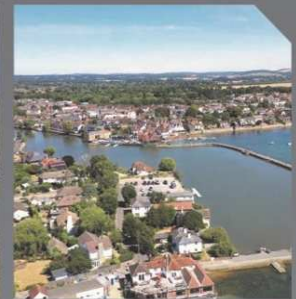
## EXPERT LETTINGS AGENTS IN SOUTH DOWNS & CHICHESTER HARBOUR PROPERTY

At Borland & Borland, Every Landlord's an Individual!

arla | propertymark  
PROTECTED

rightmove

- > Flexible or Tailor-made Lettings Service
- > Fully Managed, Rent Collection, Introduction Only
- > Independent, Local, Professional & Knowledgeable



Contact us today for **FREE LETTINGS ADVICE!** Call 01243 379000, email [lettings@borlandandborland.co.uk](mailto:lettings@borlandandborland.co.uk) or visit [www.borlandandborland.co.uk](http://www.borlandandborland.co.uk)

**Borland & Borland**  
Independent Estate Agents

50° 50' 40.2" N 0° 56' 14.7" W

6 High Street, Emsworth, Hampshire PO10 7AW

## Companionship and Help At Home



*A reliable, friendly face at your door.*

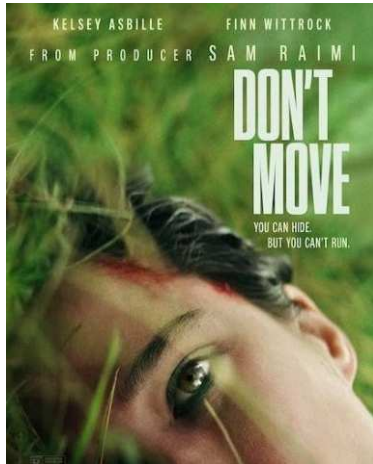
Just the help you need around the house plus keeping you connected out and about.

*Abbeyfield At Home*, part of Abbeyfield Chichester, is non-profit making so we help you keep your costs down.

**Call Becky, our At Home Manager: 01243 773221 / 07731 889019**

# Don't Move (2024)

You can hide, but you can't run! A decent-enough little thriller, now on Netflix. Kelsey Asbille (who played the fruit-loop cowgirl in Fargo 4) played it pretty well, though didn't have a lot to say as she was drugged for most of it!



The grieving Iris wakes up early in the morning thinking of committing suicide, jumping off a cliff, where her son had met his end, when a young man, dissuades her. He then kidnaps and drugs her with something that will shut down her body in twenty minutes.

It was quite tense in places with some situational atmosphere created nicely, as we get alongside our grieving girl, reflecting on life whilst fending off the serial killer, played by Finn Wittrock having fun!

It's kinda predictable in some ways and a bit unbelievable in others, so plot holes and handy co-incidences all-round! But the ticking time-bomb makes for a bit of a suspenseful thrill-ride and there's a few nicely staged gory scenes thrown in for good measure. There's some lovely scenery to look at and it's nicely shot. Certainly worth a look. **Ted the Ed.**

## THE SELSEY ARMS IN WEST DEAN

**PUB ... DINING ...ACCOMMODATION**



The perfect venue after a long walk with the dog or a cycle along Centurion Way, kick off your boots & warm your toes next to one of log burners. Relax & unwind enjoying a hot cuppa, pint of local ale or a soothing glass of wine, whilst we cook up a hearty breakfast, delicious lunch or 3 Course dinner.

**Thank You For Your continuing support  
WISHING YOU A HAPPY,  
HEALTHY & PROSPEROUS  
2025**

**The Selsey Arms, West Dean, PO18 0QX  
Call 01243 811465 or e mail us at  
thebar@selseyarms-westdean.co.uk**



**Let's make financial  
advice personal**

Adam Smith

### Wealth Management

We recognise that talking about money and finances can be tricky. It's a personal topic. So it's reassuring to know there's someone on hand who can help you address your needs, understand your goals and realise your dreams.

Our friendly and approachable service is backed by the strength and security of a FTSE 100 company, St. James's Place Wealth Management. What's more, being local means we're here to help whenever you need us.



**Adam Smith**  
Dip CII  
Principal

**We can help with all aspects  
of investment management,  
retirement planning,  
inheritance tax planning  
strategies, and later life care  
costings.**

**Get in touch for a chat.**

07803 794376  
adam.smith@sjpgp.co.uk  
www.adamsmithwm.co.uk

Associate Partner Practice



Adam Smith Wealth Management is an Approved Representative of and represents only St. James's Place Wealth Management plc (which is authorised and regulated by the Financial Conduct Authority) for the purpose of advising only on the group's wealth management products and services. More details of which are set out on the group's website [www.sjpgp.co.uk/terms](http://www.sjpgp.co.uk/terms). The St. James's Place Partnership and the St. James's Place Partnership are marketing terms used to describe St. James's Place representatives.

SJP Approved 27/02/2023

14/07/2024/01/2025



**20% off in store! \***

Coupon must be shown in store.



- Wet cleaning
- Laundry
- Alterations
- Holiday let cleaning
- Leather cleaning
- Commercial linen hire
- Ironing
- Domestic cleaning
- Repairs
- Oven cleaning
- Carpet cleaning
- One-off cleaning

**www.homeanddry.biz  
01243 543877**

\*In store only, coupon must be shown, one coupon per household.

# BE PART OF SOMETHING *Historic*

Experience 1,000 years of rural life in one remarkable site, with 40 acres and over 50 historic buildings to explore.

[wealddown.co.uk](http://wealddown.co.uk) Tel: 01243 811363



## CHRISTMAS CRAFTS FAIR...

East Dean Village Halls' Christmas Crafts Fair, held on 30th November, was a great success! There was a wide range of local artisans (most living within five miles of East Dean) and a steady flow of people came to do their Christmas shopping.

The kitchen was selling delicious homemade cakes, mince pies, quiche and sausage rolls with many people buying to take home. Stallholders said they had a lovely day, loved the atmosphere - and the delicious food!

If you are a local artisan and are interested in taking a table for the 2025 Crafts Fair (date to be confirmed but probably November), do get in touch with Vicky Mudford on [vmm@vickymudford.com](mailto:vmm@vickymudford.com)



## Wassailing Day: Blessing the Museum's orchard!

Weald & Downland Living Museum  
Sunday 19th January, 11.15am - 3.15pm

Come and watch traditional activities with a Wassailing theme. Join a procession with music, songs and short performances, from the green by the crossroad below Tindalls Cottage to the orchard for the wassail to ensure a good harvest. Please join the procession from the crossroads at 11.15am, 1pm or 2.45pm (Duration: 30 minutes approx.). Guests will be led on a route, with song and short performances, to the orchard at Bayleaf Farmstead.

In the orchard an apple tree will be decorated - there is a ceremony with bread, salt and mulled apple juice, where the audience joins in with the 'Wassail' shout and makes lots of noise with bells, rattles or whistles so bring something to bang - an old tin can, rattle or blow to make a loud noise - the musicians will let you know the time in the proceedings to do this. Children must be accompanied by an adult at all times. Please also wear warm clothes and walking shoes or boots.



**WASSAILING**  
SUNDAY, 19 JANUARY

**PESTFORCE**  
PEST & ENVIRONMENTAL CONTROL SERVICES



For a professional, reliable and experienced service please call Lance on 07799695603 or 01243 624525  
Residential, Commercial and Agricultural  
Locally based

## Gleam Team *for a Dream Clean*

Call the Gleam Team for Complete House Spring Cleaning, 'New Build' Cleans or Sparkle Cleans - carried out Weekly/Fortnightly

Ironing service a speciality

**07860 604849**  
**07825 618121**

References/  
recommendations  
available on request





THE MARTIN SEWELL  
BUILDING COMPANY

Your vision,  
our expertise.  
Building your dream  
home, together

An Award Winning,  
Chartered Building Company



### ABOUT US

Having worked in the Sussex area since 1985, our dedicated & highly skilled team are passionate about delivering outstanding results & creating dream homes for our Clients.

MSBC has built a reputation based on an ethos of openness, strong communication and honesty.

### WHY CHOOSE US?

Experienced in delivering a wide range of high quality building projects, from bespoke new builds to the sensitive renovation of listed buildings or extensions and refurbishments for private & commercial premises.

### CONTACT

01243 542 056  
www.msbc.uk.com  
admin@msbc.uk.com

### AWARDS



**INVESTORS IN PEOPLE**  
We invest in people Gold



**SUNDAY CARVERY**  
at The Griffin

**COWDRAY PARK GOLF CLUB**

*Try our fabulous Sunday Lunch menu  
created from seasonal local produce.*



Served between 12 and 3pm  
every Sunday throughout the winter months  
Please call 01730 813599 to book your table.

## Personal Assistant/ Companion/Carer

### Could you do with a bit of extra help at home?

## HELPING HANDS

Companion / Personal Assistant / Carer



**Midhurst Area**

Kind, Experienced, DBS checked, Fully qualified graduate

Melanie Griffin **07845 997416**

# TREE DRESSING IN DECEMBER

The Museum holds an annual Tree Dressing event each December. The event features a variety of activities, including lantern making workshops, a lantern parade, live music and entertainment, such as folk songs and traditional dances, storytelling and craft activities for children and a display of decorated trees. The event is a popular and fun way to celebrate the winter season and the natural beauty of trees. *Photos by HG.*



## Singleton Cricket Club – Winter Cricket Programme 2025

Midhurst Rother College

Term – £40 per term  
Every other Thursday 6pm – 8pm  
Dates: Starting 06/02/2025 – 17/04/2025

Age 11 – 18

For registration, please contact  
scricricketclubrebecca@gmail.com



## PRIME & PAINT



*Painter & Decorator*

[primeandpaint2024@outlook.com](mailto:primeandpaint2024@outlook.com)

**07909 282643**



### VISIT OUR SHOWROOM

Units 2 & 3 Chilgrove Business Centre  
Chilgrove Park Road, Chilgrove PO18 9HU  
T: 07718 161009 E: [jan@grandwood.co.uk](mailto:jan@grandwood.co.uk)  
[www.grandwood.co.uk](http://www.grandwood.co.uk)

### OPENING TIMES

**Thursday and Friday 9am to 3pm**  
**Saturday 9.30am to 4pm**  
Or by appointment with  
Jan Palmer 07718 161009



**WEALD & DOWNLAND LIVING MUSEUM TO WELCOME BLACK KNIGHT HISTORICAL LIVING HISTORY TEAM**

**The Weald & Downland Living Museum will welcome back the Black Knight Historical Living History Team from 25th January - 2nd February 2025. The arrival of the historical re-enactment group will mark the beginning of the Museum's Ritual Year celebrations for 2025, which includes Candlemas.**

From cooking, sleeping, cleaning and working, the Black Knight Historical Living History Team will take up residence at the Museum to provide an immersive glimpse into medieval life during the long winter months.

Based around the Museum's North Cray Medieval House, visitors can step back in time to see the daily lives of 15th-century villagers with demonstrations and activities.

The historical group's time at the Museum will culminate with the Feast of Candlemas on Sunday 2nd February. Part of the Ritual Year calendar, visitors will get the chance to see the Museum's team carry out preparations at Bayleaf Farmstead while learning more about the traditions associated with this historically significant day. The Ritual Year is a theme that runs throughout the Museum's interpretation programme, looking at the celebrations, festivals and traditions of the past and exploring how they have changed over time. From Twelfth Night and Easter to Midsummer, Lammas and Allhallowtide, there is a range of fascinating demonstrations that take place in the historic buildings to mark these culturally important dates throughout the year.

This immersive experience promises to be a highlight of the Museum's 2025 calendar and a must-see for anyone interested in experiencing first-hand what medieval life was like for villagers during the winter. For more information, please visit the Weald & Downland Living Museum's website.

**[wealddown.co.uk/events/this-month](http://wealddown.co.uk/events/this-month)**

**Christmas Community Café**

Well! What a success this was on 9th December! Fifteen to eighteen villagers turned up to enjoy warm sausage rolls and mince pies (kindly donated by Betty & Mick McGovern), followed by a super Christmas Raffle including a box of flower bulbs, a beautiful hand knitted shawl, boxes of biscuits, chocolates, jelly sweets and a bottle of prosecco!

I would also like to give a special mention for Penny Spence, who donated 3 bottles of wine - which certainly went down well at the end of the Cafe! In addition I'd like to mention Helen and Geoff Morris and my husband Phil, who turned up to help. Geoff for putting out the tables and chairs and Helen for taking care of the money so well. Thank you, all three. **Judy Fathers**

**GLASS ART STUDIO**

99 West Dean



- working studio with resident glass artist
- fused glass art and silver jewellery
- open mostly Wednesdays - Saturdays, 10am - 3pm
- opposite West Deans stores and café

Instagram: @artworksstudiouk  
Email: artworks01@aol.com

**RIDEA TECHNOLOGY**  
HOME AND OFFICE TECHNOLOGY SUPPORT

**Having trouble with your tech? Ed can help...**



- Desktop & Laptop PC Repair, Maintenance & Upgrade
- Home network setup and security (wired & wireless)
- Remote Support
- Virus Removal
- Training
- New & Refurbished Computers
- Laptop Screen Replacement
- Audio Visual Configuration



Tel: 01243 216121  
Email: [help@ridea.co.uk](mailto:help@ridea.co.uk)

**WWW.RIDEA.CO.UK**



[www.facebook.com/rideatechnology](https://www.facebook.com/rideatechnology)



[twitter.com/rideatechnology](https://twitter.com/rideatechnology)

**MILESTONE GARAGE**  
**COCKING**  
**SERVICING - REPAIRS**  
**MOTs - TYRES**  
**CAR SALES**  
**Courtesy Car Available**  
**01730 813148**

**Francis Ward**

**Plumbing & Heating Engineer**

Qualified, Registered and fully insured in

- Oil boiler servicing & maintenance
- Oil tank installation
- Heating system design and install
- Swimming pool oil boilers

- Solar heating systems
- Serviceing
- Maintenance

- Gas boilers
- Cookers
- Swimming pool gas boilers
- New installations servicing and maintenance

All aspects of heating and plumbing covered  
Electrical works undertaken by fully qualified Part P registered engineers  
Commercial & Domestic Spas and Swimming Pools service & repairs

**Bletchley Spas & Pools: Brightside, Singleton, West Sussex, PO18 0EX**

**Phone: 01243 811960**

**Mobile: 07941 039378**



## Florist Caroline Daines announced as Designer of Chichester Cathedral's Festival of Flowers 2026

Chichester Cathedral is delighted to reveal Caroline Daines as the Designer for its highly anticipated Festival of Flowers 2026. This biennial event, which draws thousands of visitors, transforms the cathedral's majestic 950-year-old spaces into a breathtaking celebration of floral artistry and creativity.

Caroline, founder of the acclaimed Sussex-based floral design studio Nordic Twigs, brings with her a wealth of experience and a unique creative vision. Inspired by her Swedish roots and the rolling landscapes of West Sussex where she has lived for nearly 15 years, Caroline's work combines Nordic simplicity with Britain's rich, eclectic heritage. Her floral creations are renowned for their natural elegance, seasonal abundance, and ability to evoke the beauty of the great outdoors.

Speaking about her appointment as Designer, Caroline said "I was absolutely thrilled to be approached for the role of Designer for Chichester Cathedral's Festival of Flowers in 2026. It's a privilege to contribute to such a historic and inspiring place, and I'm excited to weave a story through flowers and foliage that will enchant visitors from near and far. This opportunity to fill the Cathedral with nature's beauty and creativity feels truly special."

The Festival of Flowers will take place from 3rd – 6th June 2026, with further details of ticket sales being announced on the Cathedral website soon [chichestercathedral.org.uk](http://chichestercathedral.org.uk)



**Live Music!**

*Let us come and play for you!!*

*We play 60's and 70's music for parties and celebrations*

Contact : *Nicholas L. Taylor*  
Email: *nicholasltaylor@aol.com*

**MOLE CATCHING**  
"NO MOLE, NO FEE"

**WASPS / HORNETS**

CONTACT ANGUS ON  
**07828 134086**  
[WWW.ASCOUNTRYSIDESERVICES.CO.UK](http://WWW.ASCOUNTRYSIDESERVICES.CO.UK)

THE BRITISH MOLE CATCHERS REGISTER  
SUPPORTING TRADITIONAL EXPERTISE AND SKILLS

# WEST DEAN

## STORES & TEA ROOM

Fresh local produce to eat in or takeaway

Order when you arrive, or pre-order by phone

Local deliveries available - please contact us for more details

Bread, cakes and sandwiches • Hot and cold drinks • Fruit and vegetables • Milk and eggs  
Honey and jams • Newspapers and magazines • Greetings cards • Household essentials  
Logs and kindling • Pet foods • Card payments only

**FREE WiFi**

### Opening Times

Mon - Fri 08:00-17:00 Sat & Sun 08:00-16:00 Bank Holidays 08.00-16.00

West Dean Stores Ltd, West Dean, Chichester, PO18 0QY Tel: 01243 818222

[stores@westdean.org.uk](mailto:stores@westdean.org.uk) | [www.westdeanstores.co.uk](http://www.westdeanstores.co.uk)



## Inside the Brent Lodge Wildlife Hospital in January



Happy New Year from the team and animals at Brent Lodge Wildlife Hospital. We hope you all had a very merry Christmas! It was a busy time for the hospital team but we made sure to each enjoy a mince pie on Christmas Day morning whilst caring for the animals and carrying out daily duties.

In 2024, we admitted more wildlife casualties than the previous year, including hundreds of hedgehogs, plentiful pigeons and flurries of foxes, to name a few! We are preparing for a new year filled with new challenges and successes and look forward to what 2025 will bring.

This poor feral pigeon came into us before Christmas with a metal bullet lodged under his wing which



would've been causing him excruciating pain. The bullet was surgically removed and he was put on to immediate painkillers and antibiotics to reduce the bruising and swelling. His stitches healed very well and he has been making great progress considering his ordeal.

Now that he is off medication, he will remain in one of our outdoor enclosures so he can continue to build up his wing strength until he is assessed for release.

## HELPING BRENT LODGE WILDLIFE HOSPITAL

A fun way to support our vital work is to invite us along for a talk/workshop to learn about our work and British wildlife. Or consider organising a fundraising event in aid of Brent Lodge Wildlife Hospital. Whether it's a bake sale, raffle, quiz, tombola, talent show – you name it!

**If you'd like to enquire about a talk or fundraising, please contact [alex.foster@brentlodge.org](mailto:alex.foster@brentlodge.org) and I'd be delighted to help.**

## Discover the Heart of Community at Graylingwell Park

Graylingwell Park has been named runner-up in the Academy of Urbanism Great Neighbourhood Award! This recognition celebrates the vibrant, supportive, and welcoming community that defines our neighbourhood. This is a collective achievement that everyone in Chichester can be proud of.

If you haven't yet discovered all that Graylingwell Park has to offer, now is the perfect time! From the Italian-inspired cafes at Graylingwell Chapel and The Pavilion, run by the talented team at Caccia and Tails, to a wide range of events and activities across venues like The Chichester Shed, Havenstoke Park, and more, there's something for everyone to enjoy.

Your support of these cafes and the activities held at our venues plays a crucial role in keeping Graylingwell Park buzzing with life. It helps Chichester Community Development Trust continue delivering the projects that make this neighbourhood a special place for all.

Join us in celebrating what makes Graylingwell Park an extraordinary place to live, connect, and create lasting memories!



### Seasoned Firewood

Cut and split to your requirements

**LAWN MOWING  
HEDGE CUTTING  
GARDEN CLEARANCE**

*Personal service from a local family business*

**KEITH GOACHER**

**01243 811746**

**07976 740748**



We are a small playschool in a beautiful rural location with access to Levin Down.

Open 8.30am – 3pm

Term Time Only

[www.singleton-playschool.co.uk](http://www.singleton-playschool.co.uk)

[contact@singleton-playschool.co.uk](mailto:contact@singleton-playschool.co.uk)

07519 913406



**Business Stationery** - Letterheads and Business Cards

**Promotional Displays** - Banners and Site Signage

**Marketing Products** - Leaflets and Brochures

**Transactional Items** - Books and Pads



5 Phoenix Business Centre, Spur Road, Quarry Lane, Chichester PO19 8PN  
01243 78 22 99 [chichester@lollipopprint.co.uk](mailto:chichester@lollipopprint.co.uk) [www.lollipopprint.co.uk](http://www.lollipopprint.co.uk)



- Flowers for all special occasions
- Wedding and event floristry specialist
- Large selection of fresh flowers always available
- Order service available
- Local, national and international delivery service
- Christmas Wreath Workshops

[janewalkerforgeflowers.co.uk](http://janewalkerforgeflowers.co.uk)

[forgeflowers@gmail.com](mailto:forgeflowers@gmail.com)

01243 788484

Stane Street, Halnaker, Chichester, PO18 0NQ

## OUR VILLAGES IN LIVING MEMORY

**In 1958 the Singleton and East Dean Women's Institute collated together people's reminiscences of their lives in the valley up to then, with some recounting stories they had heard about events that happened in even earlier times.**

The result was a book called "Our Villages in Living Memory" and what was then a collection of histories is now an historic document in itself. It wasn't published in the conventional sense, but a number of copies were made and I have recently had the good fortune to borrow one of them. The type on some pages is badly faded (I imagine they were printed on a Gestetner Machine, a device rendered obsolete by the photocopier) but I hope to have the time to copy the whole text onto my computer sometime in the new year and then make it available via the Valley Diary website, so everyone can read it!

Meanwhile here are a couple of extracts, exactly as written down in 1958, the first indicating that fly-tipping is nowhere near as modern a thing as we might think:- "The problem of litter is first mentioned in 1907 when the Parish Council complain of the nuisance caused by people depositing rubbish in the lime kiln and ask the landlord of the Star and Garter to cease throwing dirty water down the sheep drain. In March 1927 mention is made of litter dumped close to the road; and in September of the same year it is pointed out that this has become a source of danger to motor cars and other traffic. On March 6th 1928 a notice board was put up near the pond, informing the public that persons throwing rubbish in it would be prosecuted. Unfortunately the board appears to have been of little use for in

1934 the Rural District Council was asked to clear out the pond as its state "is injurious to health". In was in that year that there were 40 cases of scarlet fever, and the Parish Council complained to the Minister of Health that the school had not been disinfected, although both the Head Teacher and the school cleaner had caught the disease."

The lime kiln referred to was on the left going up East Dean Hill, and some remains of it can still be seen, now largely buried. I'm not sure where the "sheep drain" was, although presumably it was close to the pub. Apart from that not much changes, but at least people don't seem to be chucking stuff into the pond these days! The next extract was already a distant memory by 1958, but it's quite a good tale:-

In 1800 a cordwainer came to live in the house now called Walnut Tree Cottage, a man called William Feachen who had a fair daughter called Mary and an apprentice called Harry Leamon. One night Mary slipped from the upper window on the side of the house and over the road to Harry, as he sat on his horse, and away they went to Gretna Green. Her parents were sitting in the room below, but couldn't see into the road because of the thick laurel hedge which in those days grew between the road and the house. When they did discover what had happened they harnessed their horse into the chaise and set off in pursuit. They reached Midhurst without seeing the fugitives and gave up the chase. But Mary and Harry came back and were forgiven, and in due course inherited Walnut Tree Cottage, Pond Cottage and the two cottages opposite. So happily ever after, it would seem! The fascinating thing about that story is that even now one can see the window Mary climbed out of (it isn't very high, the ceilings in Walnut Tree Cottage are quite low) and picture Harry waiting for her, on his horse, outside The Forge. **Tim Weeks**



### I'm a Bean Leaver (with apologies to The Monkees)

#### A Poem by Francis

His answer was always the same,  
When asked if he 'believed'.  
"Each to his own," he'd reply,  
Not wishing to deceive.

But his doubts were increased,  
About things up above.  
When working in his garden,  
On the veg patch that he loved.

Would he ever believe?  
He said that he might.  
If the weather could be changed,  
So it only rained at night.

But his biggest moan of all,  
When he often caused a scene.  
Was going on about the colour,  
Of the humble runner bean.

When sent down the garden,  
To gather that tasty crop.  
Whilst searching very hard,  
He still missed quite a lot.

His search was always intense,  
Sometimes he could scream.  
Why oh why are bean and leaf,  
The exact same shade of green?

His neighbours got quite worried,  
Watching him one day.  
Was he knelt down weeding?  
No. He was starting to pray.

"If we are cared for from above,  
I'll dedicate myself to you.  
Just change runners from green,  
To red! Pink! Or Polka Dot Blue!"

### A Quiet Stroll

#### A Bonus Poem by Francis

Walking down the middle of our lane,  
I heard some muffled cries.  
"What was that?" I asked my son,  
He said, "It must be the cat sighs."

### Kingley Vale Lime and Flint

Suppliers of lime, flint and  
specialist building materials

[www.kingleyvallimeandflint.co.uk](http://www.kingleyvallimeandflint.co.uk)

[info@kingleyvallimeandflint.co.uk](mailto:info@kingleyvallimeandflint.co.uk)

01243 767828/07557 515314



# The Valley Parish

[www.thevalleyparish.org](http://www.thevalleyparish.org)

[www.facebook.com/ValleyParish](https://www.facebook.com/ValleyParish)



**Sunday 26<sup>th</sup>  
January**

11am at West Dean

Join us for bible stories,  
songs and games.

(oh and of course cakes and biscuits)

## Services and Events

5 <sup>th</sup> January Epiphany Sunday	10am	Holy Communion With Choir East Dean
---	------	---

12 <sup>th</sup> January Baptism of Christ	10am	Holy Communion Singleton
--	------	-----------------------------

19 <sup>th</sup> January	10am	Holy Communion West Dean
--------------------------	------	-----------------------------

26 <sup>th</sup> January	10am	Holy Communion West Dean
--------------------------	------	-----------------------------

	11am	Children's Church West Dean
--	------	--------------------------------

### Contacts

#### Parish Priest

**Rev Sarah Manouch**

priestvalleyparish@gmail.com/07468 854864

(Principal working days are Friday, Saturday and Sunday. Not available on Thursday)

#### Churchwarden

**Wendy Goacher** - 07974 689907 /

wendygoacher@yahoo.com

**Sarah John** - 07769 887546 /

sarance@btinternet.com

#### PCC Secretary

**Susie Holmes** -

pccsecretaryvalleyparish@gmail.com

### Epiphany

Although we are celebrating Epiphany Sunday on 5<sup>th</sup> January, the actual date for the Feast of the Epiphany is 6<sup>th</sup> January, 12 days after Christmas. Tradition says that Christmas decorations should be taken down the day before Epiphany, although some leave them up until Candlemas (2<sup>nd</sup> Feb this year), when Jesus was presented to God in the Temple in Jerusalem.

Epiphany means 'to reveal' and it marks the coming of the Wise Men, or the Magi, when Jesus was first 'revealed' to the non-Jewish world, to the Gentiles. Because Epiphany marks the first revelation of Christ to the Gentiles, for the early church, and still for many Christians around the world today, the celebration of The Epiphany was/is more important than Christmas.

# The Diary

Here's a quick overview of what's actually going on, in and around the villages of the Lavant Valley in the coming months. Do please let us know if we've missed anything and we'll add it next time for the benefit of all.

[www.thevalleydiary.org](http://www.thevalleydiary.org)

## January 2025

**Wed 8th** West Dean Parish Council Meeting

**Tue 14th** Ladies Night: The Star & Garter: East Dean: 7pm

**Thu 16th** WI: The Hygiene Bank: Singleton Village Hall: 7pm

**Sat 18th** Fox Clay Shoot: The Fox Goes Free at Charlton

**Sun 19th** Wassailing Day: Weald & Downland Museum: 11.15am

**Mon 20th** Singleton & Charlton Parish Council Meeting: Singleton Village Hall: 7pm

**Mon 20th** East Dean Parish Council Meeting: 7.30pm: East Dean Village Hall

**Mon 27th** The Valley Diary Copy Deadline: 12noon

## February 2025

**Sat 15th** Fox Clay Shoot: The Fox Goes Free at Charlton

**Thu 20th** WI: Jeremy Rigby: Historic Dockyard Harbourmaster: Singleton Village Hall: 7pm

## March 2025

**Thu 6th** VGC Horticultural Quiz: 6pm: East Dean Village Hall

**Mon 17th** Singleton & Charlton Parish Council Meeting: Singleton Village Hall: 7pm

**Thu 20th** WI: Annual Meeting & Chris Williams on Edward James' Mexican Home: East Dean Village Hall: 7pm

**Sat 22nd** Fox Clay Shoot: The Fox Goes Free at Charlton

**Sat 29th** VGC Spring Show: 2.30pm: Singleton Village Hall

## April 2025

**Mon 28th** VGC Bacon Bap Morning: 10.30am: East Dean Village Hall

**Mon 28th** East Dean Parish Council Meeting: 7.30pm: AGM at 7pm: East Dean Village Hall

## May 2025

**Mon 19th** Singleton & Charlton Parish Council Annual Meeting: Singleton Village Hall: 7pm

## July 2025

**Mon 21st** Singleton & Charlton Parish Council Meeting: Singleton Village Hall: 7pm

## August 2025

**Sat 9th** VGC Annual Show: 2.30pm: East Dean Village Hall

## September 2025

**Mon 15th** Singleton & Charlton Parish Council Meeting: Singleton Village Hall: 7pm

**Got something to add to the Diary?**

**Please let us know...**

*Lots more dates and events can be found in the Diary Online at...*

[thevalleydiary.org/diary](http://thevalleydiary.org/diary)

Deadline for the...

## February 2025 Edition

All information for to arrive by **12.00hrs (noon)** please on...

**Monday 27th January**  
[editor@valleydiary.org](mailto:editor@valleydiary.org)

*Submissions, news, reviews, event information, photos and anything you have to share with your community should arrive **as soon as possible**.*

## The Team

**Ted Salmon, Editor & Accounts**  
[editor@valleydiary.org](mailto:editor@valleydiary.org), 07903 017910

**David Mather, Advertising**  
[davidmathero@gmail.com](mailto:davidmathero@gmail.com), 01243 774385,  
07973 820877

**Chris Kelly, Distribution**  
[chriskelly7043@yahoo.co.uk](mailto:chriskelly7043@yahoo.co.uk), 01243 811833

## The Distribution Team

**East Dean:** Tim Weeks, Wendy Heather

**Charlton:** Penny Buchan, Valerie Tapley

**Singleton:** Penny Spence, Jane Penny, Elaine Kelly, Judy Fathers, Gay Godfrey, Vicky Gillespie

**West Dean:** Tony Boxall, Sandra Muggerridge, Micky Johns, Carol Corbett

**Binderton:** Barbara Boxall

**Goodwood:** Tony Boxall

**Lavant:** Sheila Sims

**Chichester:** Penny Buchan

**The legal bit:** We (The Valley Diary Team) make every effort to ensure the accuracy of entries & adverts in The Valley Diary (TVD). Content is based on the latest info at the time of printing. This may change. Every effort will be made to circulate info as soon as possible in subsequent editions. This edition will not be reprinted and re-circulated if any details change during its period of validity. In no circumstances can TVD accept any liability for loss and damage which may arise or result from any error in or omission of any entry or advert whether relating to wording space, position, artwork, or telephone number. TVD is not an agent for any Business or individual within its pages and is unable to vouch for advertising claims, professional qualifications, trade certifications, membership of trade association or content of web sites whose addresses may be shown in individual entries or adverts published anywhere within its pages. TVD advises readers to satisfy themselves as to the type of goods or services offered or qualifications held by the businesses or individuals appearing in its pages. In short, we're grateful to advertisers for providing funds to keep The Valley Diary going but cannot be held liable in any way by readers if advertisers don't live up to their claims and we won't get involved in any dispute between advertisers in TVD and their customers. Lastly, we don't publish anonymous submissions and contributor articles remain exclusively the views of the author. They are not endorsed by, and don't necessarily reflect the views of, the volunteer editorial team at The Valley Diary.

**J W SMITH**  
**CHIMNEY &  
LOG BURNER SWEEP**  
CHIMNEY SWEEPS (Power Sweep & Vacuum System)  
CAMERA SYSTEM USED | BIRD NEST REMOVAL  
STOVE MAINTENANCE FULLY INSURED AND CERTIFICATED  
CALL NOW **07769 211143** **NCCSA**  
[www.jwsmithchimneysweep.co.uk](http://www.jwsmithchimneysweep.co.uk)

# Useful Telephone Numbers

CDC Councillor, Henry Potter	07792 857973
East Dean Football Club	07944 036709
East Dean PC Clerk	07712 647511
East Dean Village Hall	07785 740625
Goodwood Security	07909 876823
Lavant Road Doctors Surgery	01243 527264
Lavant Road Pharmacy	01243 380185
Local Police	101
Singleton Fete	01243 818037
Singleton Parish Clerk	07702 240126
Singleton School	01243 811679
Singleton Tearooms	01243 811899
Singleton Village Hall	TBA
Weald & Downland Museum: Office	01243 811363
Weald & Downland Museum: Shop	01243 811020
West Dean College	01243 818300
West Dean Fete	01243 811247
West Dean Gardens	01243 818318
West Dean PC Clark	07596 884847
West Dean School	01243 811247
West Dean Stores	01243 818222

# Lineage Ads.

**FOOTPATH WARDEN** Clive Jackson, 07740 308125  
**HOME FOOT CARE** 01243 811442.  
**DOG GROOMING - SMART DOGS** Lesley Pollard 811805  
**PILATES CLASSES** Jo, 07917 177404  
**FERNS RESTORATIVE YOGA** 818058  
**STANDBY NANNY** Josie, 07747 867652  
**PAINTER AND DECORATOR** Arthur, 07936 082626  
**YOGA WITH CARA** 07787 512283  
**YOGA WITH JACQUI** 01243 535223, 07854 441010  
**YOGA WITH KATIE** Tel. Tel 07918 757758  
**REGISTERED NURSE** Dawn, 07876 796034  
**PAINTER** Shaf 07706 105526  
**PLUMBER** Peter 07825 268317  
**DOG GROOMING** Leandra 07944 788727  
**BUILDER** James 07788 532135  
**TAXI** 778499  
**REGIONAL GARDEN TIDYING** Please call 08000 468137  
**MOBILE CAR WASHING SERVICE** Stuart, 07568 377302, stuartburn@icloud.com  
**SEAMSTRESS** Sewing and alterations. Casual, bridal, prom, suiting & curtains 07391 184605  
**IRONING SERVICE** 531138 or 07773 009241  
**FETCH DOG WALKING** Canine specialist dog Walker, Helen Ferrell, 07765 577290

## Albert says...



I said when you're in the book shed,  
Find me a book on spaniels.  
She said no chance of that,  
They only have murder manuals.

## Register of Local...



**Trundlers** Charlton - ask another Helen 01243 811686  
**Hunters Lodge**, Lavant - or indeed another Helen!  
 01243 532415 - 07788 663712  
**B&B - Ring Sophie** on 01243 811465  
**Harper's Cottage**, East Lavant. Ring Caroline 01243 278659  
**Flint Cottage**, 47 Mid Lavant, Lavant Road, PO18 0AA: Sue Kemble 01243 785883 / 07814903541  
**The Shepherds Barn**, Chilgrove: Lucy 07775 934999  
[www.shepherdsbarnsussex.co.uk](http://www.shepherdsbarnsussex.co.uk)  
**The Blue Bell**, Cocking: 01730 239669  
**The Nest**, Singleton: Self-Contained Accommodation: Julie 07887 943523  
**Barnfield**, Heyshot, Tessa: 07789 888004



THE  
**STAR & GARTER**  
 COUNTRY INN WITH ROOMS  
 EAST DEAN

The Star & Garter is a gorgeous country inn, which nestles in the South Downs National Park, at the heart of the Goodwood Estate.

FOR TABLE BOOKINGS AND ROOM RESERVATIONS CONTACT:

**01243 811318**

INFO@THESTARANDGARTER.CO.UK  
 WWW.THESTARANDGARTER.CO.UK

f t i #followthestar





## Strip Tease

### A Poem by Francis

I've got a big chip on my shoulder,  
There is something bugging me.  
And if you feel the same,  
We could form the BBC.

NO! Not that broadcasting mob,  
Come on, watch my lips.  
The BBC in this case means,  
'Bring Back Chips!'

Please listen you lovely caterers,  
I'm an easy going bloke.  
But what you all call chips,  
Is really becoming a joke.

Cutting a spud longways,  
Into four chunky bits.  
I'm afraid I have to tell you,  
Is not what we call chips.

I was once served 'chips',  
In a size quite absurd.  
And when trying to complain,  
I choked on my every word.

I opened my Oxford dictionary,  
And into the Cs did go.  
Their definition clearly states,  
A "strip" of potato.

So get your banner ready,  
And I will see you there.  
Where will we hold our protest?  
It's got to be parliament square.

Or maybe Buckingham Palace,  
Is where we'll have our moan.  
Because this wouldn't have happened,  
If it was King Edward's throne.

## Live Well with your Respiratory Condition this Winter



Winter brings chilly temperatures, shorter days and an increased risk of respiratory illnesses - especially for those living with conditions such as Asthma or COPD (including Emphysema and Bronchitis). Cold air, seasonal illnesses, and being less active can aggravate symptoms, but a little preparation can make all the difference. Here are some practical tips for staying well this winter...

### 1. Stay Warm, Inside and Out

Cold air can irritate sensitive airways. Wear a scarf or mask over your nose and mouth when outdoors to warm the air you breathe. Keep your living space at a comfortable temperature but avoid overheating as this can dry out the air.

### 2. Prevent Infections

Winter is flu and cold season. Protect yourself with seasonal vaccinations and wash your hands regularly when out and about.

### 3. Manage Your Medications

Ensure you have an adequate supply of any prescribed medications and use them as directed. Keep a written action plan to manage flare-ups and consult a healthcare professional if you notice changes in symptoms.

### 4. Stay Active

Gentle exercise can maintain lung health and boost immunity but avoid outdoor activity on very cold or damp days. On these days, consider indoor activities instead.

### 5. Listen to Your Body

Pay attention to early signs of illness or exacerbation. Rest when needed, and don't hesitate to seek medical advice when needed.

Respiratory physiotherapy can help you, or a loved one, live well with their respiratory condition by optimising symptoms so that the day-to-day is more manageable. For more information, visit [living-well-respiratory.co.uk](http://living-well-respiratory.co.uk) or call 07425 055014 to speak with Kate who is based at The Pavilion in Graylingwell, Chichester.

*KLE*  
*Decorators Ltd*  
Finest Quality Decorating  
All Areas of Painting & Decorating  
Undertaken.  
Finished to the Highest of Standards.

*Kyle Edwards*  
[kledecorators@gmail.com](mailto:kledecorators@gmail.com)  
**07880 317071**

**Peter Roberts** CTA ATT  
Chartered Tax Adviser  
*Formerly a Tax Adviser for a local leading firm of Chartered Accountants for many years, now a sole practitioner providing:*

- Personal self-assessment tax return completion
- Personal tax reviews
- General personal tax compliance
- Quick, efficient and personal service including home visits at no extra cost

Telephone: 01243 773580  
Mobile: 07939 819364  
Email: [prpersonaltax@btinternet.com](mailto:prpersonaltax@btinternet.com)  
Website: [www.prpersonaltax.co.uk](http://www.prpersonaltax.co.uk)

**Reynolds**  
*Our family caring for yours*

**Funeral Service • Memorial Masons**

For more information please contact  
James or Stephen Reynolds:

43 Spitalfield Lane  
Chichester PO19 6SG  
Tel: 01243 773311

27 - 31 High Street  
Bognor Regis PO21 1RR  
Tel: 01243 864745

[www.reynoldsfunerals.co.uk](http://www.reynoldsfunerals.co.uk)

**Martin Shaw in**

## A MAN FOR ALL SEASONS

**Chichester Festival Theatre**

**28th January - 1st February**

The greatest, most powerful and dangerous figures who shaped English history are brought vividly to life in Robert Bolt's award-winning play. Martin Shaw stars as Sir Thomas More – scholar, ambassador, Lord Chancellor and friend to King Henry VIII. Above all, he is a man of integrity, loved by the common people and his own family. When Henry demands a divorce from Catherine of Aragon, clearing the way for him to marry Anne Boleyn, the staunchly Catholic Thomas is forced to choose between his loyalty and his own conscience, committing an incredible act of defiance for which he eventually pays the ultimate price.

**Booking via 01243 781312 - [cft.org.uk](http://cft.org.uk)**



**WEST DEAN  
COLLEGE  
APPOINTS ANNA  
GOUGH-YATES  
AS NEW CEO**

West Dean College is delighted to announce the appointment of Professor Anna Gough-Yates as its CEO to develop and shape the future of the College. Anna joins West Dean from the University of Roehampton, where she has held the post of Deputy Vice-Chancellor & Provost for the past six years.

With over 30 years of experience in higher education, Anna has an impressive track record of successful academic leadership. At Roehampton, her responsibilities have encompassed education, research, external engagement, partnerships, academic development and sustainability. She studied history of art, design and architecture at the University of East Anglia, and gained her PhD from the University of Birmingham. Her research focuses on representations of the feminine in contemporary culture.

Anna said "I'm absolutely delighted to be joining this incredible institution, at this exciting stage of its development. West Dean occupies a unique position in the landscape of arts, design, craft and conservation education in the UK and internationally. I relish the opportunity to build on its extraordinary legacy to ensure an equally dynamic future for the College."

Anna takes up the position at a pivotal stage in West Dean's development. Since opening in 1971 as a centre for education and training in conservation and the visual and applied arts, the College has built a global reputation as a home for groundbreaking creativity.

**New commissioning  
grant launched by  
Chichester Fringe**

Chichester Fringe launched its brand new commissioning grant scheme. £250 will be offered to 2 successful artists or companies to help bring their work to life. As well as financial help, applicants will get a place in the Chichester Fringe 2025 programme.

The grant is for those who need additional financial support in order to develop your performance, this could be finance to help secure rehearsal space, props or costume.

Chichester Fringe will announce the successful applicants in the New Year.

[chichesterfringe.co.uk/about-us/commissioning-grant-2025](http://chichesterfringe.co.uk/about-us/commissioning-grant-2025)

**TRADITIONAL  
TIMBER  
WINDOWS**

**Bespoke,  
hand crafted  
windows  
made here in  
the Valley**



**07973 399487**

**07881 940057**

[valleytraditionalwindows@gmail.com](mailto:valleytraditionalwindows@gmail.com)

**MOBILE  
POST OFFICE**

**THE SELSEY ARMS at  
WEST DEAN**

*MONDAYS: 12.30pm to 2pm  
THURSDAYS: 12.30pm to 2pm*

**THE PARTRIDGE INN at  
SINGLETON**

*MONDAYS 2pm to 3.15pm*

*Mobile Postmaster, Operating from  
Grayshot, 01428 604401 - 07484 526779*



**DYSON KING**  
*ARCHITECTURAL  
IRONMONGERS*

*25 Years Supplying Fittings  
for Doors, Windows, Gates,  
Locks & Safes.*

*Service to Architects, Builders  
& The General Public*

**01243 776739**

[www.dysonking.com](http://www.dysonking.com)



**GOSS MINI SKIPS LTD**  
[skiphire@live.co.uk](mailto:skiphire@live.co.uk)



Skips delivered and collected on small lorries to access most properties. Friendly and reliable local drivers.



If you require help or advice on you waste needs or requirements call Godfrey on the number's below he will be happy to help.

**Local family run waste transfer station, based in Duncton.  
Mini & Midi skips available, prices on request.**

**Call us – tel 01730 817750 – mob 07979 820932**

**THE BOOK SHED**  
*Singleton Village Hall*

Now Open...

**Tuesdays and Thursdays  
10am to 4pm**

Access is through the side gate and is the first shed on the right.

The books are free for you to keep or return.

If you have any books you wish to donate please place them on the shelves.



# St Wilfrid's Hospice

Making a difference to local lives

## Latest News from St Wilfrid's Hospice

### Make a Will fortnight

This March 10th – 21st, local solicitors are helping to support St Wilfrid's Hospice and the local community. During this fortnight you are invited to get your Will written with one of the participating solicitors. Instead of their usual Will writing fee, the solicitors ask that you instead donate to the Hospice. This donation will help support St Wilfrid's Hospice to continue to provide expert care and compassion to local lives. There is no expectation for you to remember St Wilfrid's Hospice in your Will, however, we would be incredibly grateful if you did consider leaving us a gift. One in four of our patients' care is funded through gifts left in Wills by our kind supporters. Keep an eye on our website and socials for more! [www.stwh.co.uk/mawf](http://www.stwh.co.uk/mawf)

### Wedding Fair

St Wilfrid's are excited to be holding their first ever Wedding Fair, showcasing some wonderful wedding items and welcoming wedding suppliers to display their own skills and services. You can join us on Sunday 9th March, from 11am to 3pm, to discover beautiful and affordable items at Oakwood school. Register your interest to stay up to date and hear more about the event: [www.stwh.co.uk/wedding-fair](http://www.stwh.co.uk/wedding-fair)

### Moonlight Walk

This June 14th 2025, St Wilfrid's Moonlight Walk will return, bringing your local community together for a night to remember. Walkers will be treated to multiple unique experiences at familiar areas, such as the event village at Chichester College, an in-memory stop at Priory Park's Guildhall and an incredible light display at Bishop Palace Gardens. Purchase your tickets now: [www.stwh.co.uk/moonlight-walk-2025](http://www.stwh.co.uk/moonlight-walk-2025)

### Bake a difference

Looking to pick-up a new hobby in 2025? Why not consider taking up baking, and to give you some motivation, do it in support of St Wilfrid's Hospice. We love to see the bakes that our amazing community create and so we are asking that you consider holding a baking-themed event to raise funds for the Hospice. This could be a bake-off, coffee morning, bake sale or anything else baking related. Whatever you decide to do, it can be a great way to bring friends, family and the local community together, while also raising funds to support the vital end-of-life care that the Hospice provides. Find out more on how to get involved: [www.stwh.co.uk/bake-a-difference](http://www.stwh.co.uk/bake-a-difference)

### Get Active

In 2025, we have a variety of great challenges that are perfect for those of you looking to step outside of your comfort zone. From a trek along Hadrian's wall and up Snowdonia at night, to the London Marathon and the Great South Run, there are lots of great challenges for those of you looking to push yourselves and get active in 2025. See all our available events: [www.stwh.co.uk/events](http://www.stwh.co.uk/events)



## Berry-Middleton Ltd

Specialists in Flintwork for over 20 years  
 Stonework-Brickwork-Roofing-Hard Landscaping  
 Maintaining the very best tradition in Sussex  
[www.berry-middleton.co.uk](http://www.berry-middleton.co.uk) Tel: 07771 512012  
 Email: [mark@berry-middleton.co.uk](mailto:mark@berry-middleton.co.uk)

## CHICHESTER NATURAL HISTORY SOCIETY

**Wednesday 8th January** Illustrated Talk by Graeme Lyons, ecologist and entomologist, on 'Monitoring Biodiversity the Graeme Lyons Way' and 'The Spiders of Sussex' to the Chichester Natural History Society: The Pallant Suite, Masonic Hall, South Pallant, Chichester: 7.30pm: Members free/visitors £3: 01243 786079: wheelchair access

## RSPB

**Thursday 23rd January** Susannah Gold on 'Avian Influenza – An Update': 7pm: The talks are free to all RSPB Chichester Local Group members and £4 each to non-members. Places are limited, so please book your place in advance by email: [chichesterbirds@gmail.com](mailto:chichesterbirds@gmail.com) or phone 07402 375257

**Maria Wildman**

**01243 262833**

**[thewildthings2@outlook.com](mailto:thewildthings2@outlook.com)**



## L. WEST & SON

### CARPENTRY & JOINERY SPECIALISTS

We deal with all aspects of carpentry & joinery, including bespoke windows, doors, staircases, cabinets & more. Please get in touch to discuss your requirements.

*New Barn, Newhouse Lane, East Dean, Nr. Chichester, PO18 0NJ*

Tel: 01243 811354 E-mail: [sales@lwestandson.co.uk](mailto:sales@lwestandson.co.uk)

Website: [www.lwestandson.co.uk](http://www.lwestandson.co.uk)

Provided by




CHICHESTER DISTRICT  
**Farmers' Markets**  
 loving our local food

Chichester city centre 9am - 2pm  
 1st & 3rd Friday of every month





[www.chichester.gov.uk/farmersmarket](http://www.chichester.gov.uk/farmersmarket)



# RIGHT TO KNOW: NEW MEASURES TO PROTECT VICTIMS OF STALKING



Police will now be able to release the identity of an online stalker at the earliest opportunity. Before, victims of online stalking did not know their stalker's identity due to the anonymity afforded by the online space. This meant that a stalker might, for example, sit next to their victim on public transport or work with them - and the victim wouldn't know.

Stalking Protection Orders (SPOs) will also become more widely available, banning stalkers from going within a certain distance of their victims or contacting them. This is a measure that is not new to Sussex - it's been nearly five years since Sussex Police secured the very first SPO in the country and we've continued to implement this protocol as a default in relevant cases. I spoke about the new measures with ITV's Kit Bradshaw on Tuesday, you can watch the interview on X via [tinyurl.com/2a844kdh](https://tinyurl.com/2a844kdh)

**Katy Bourne, Sussex Police & Crime Commissioner**

## Lavant Friendly Club

This is usually on the 1st Wednesday afternoon of the Month between 2 and 4pm but in January it's the 2nd Wednesday - the 8th - when we have Bingo and traditional country western entertainment from Country Ken. Cost is 50p at Lavant Hall and the minibus meets the service bus at Yarbrook.

## Chichester Country Music Club

There's usually a concert on the 2nd Friday evening of the month at 7.30pm. This month for £10, on 10th January, at Lavant Hall you can listen to Paula McKaskill who sings in hotels for Lakes and Glens Holidays in Fort William, Scotland. There will be a bar. There's also usually a Dance at Mundham Hall on the 4th or 5th Saturday of the month. On January 24th for £10 you can hear the super young singer Henry Birkett there. There's no bar at this event.

## Lavant Short Mat Bowls Club

This is on Thursday evenings between September and April at 7pm and costs £3. Also on some Sundays. It's good exercise and there are league matches too. [tonybleach@talktalk.net](mailto:tonybleach@talktalk.net), 01243 527439

## Petworth House & Park

[nationaltrust.org.uk/Petworth](http://nationaltrust.org.uk/Petworth)

**A Christmas Spectacular** at Petworth House ends on 5th January: Open 10.30am - 4pm: Discover a festive wonderland at Petworth House, where the historic state rooms are filled with showstopping trees and twinkling lights, beautiful garlands, and atmospheric lanterns. Mischievous mice have taken over the Marble Hall, and in the chapel you'll find a paper-crafted nativity scene. Normal admission to Petworth House applies. No booking required.

## January Closure

**6th - 24th January 2025**  
Petworth House and Pleasure Garden will be closed for three weeks while we update our fire safety system throughout the site. We will also be carrying out cleaning and conservation work on the collection, and refurbishment of the shop and other areas. The deer park will remain open as usual.

THE MILK HUT  
IDES BARN  
ORGANIC DAIRY



The Milk Hut offers fresh organic milk from our on-farm vending machine. Our milk is gently pasteurised and available in reusable glass bottles. Come and visit us and enjoy fresh organic milk and milkshakes, open 7am - 7pm every day. We look forward to seeing you. Ides Barn, Droke Farm, East Dean

## A.S.M. Carpentry & Joinery Ltd

Over 35 years of experience in all aspects of carpentry  
Professional, Qualified, Insured

**Local and Reliable  
Carpentry Company**

[andrew@asm-carpentry.com](mailto:andrew@asm-carpentry.com)

**Phone: 01243 278659  
Mobile: 07789 748368**



**Dismantling & Felling  
Crown Thinning & Reducing  
Removal of Deadwood  
Pruning  
Hedge Cutting  
Stump Grinding**

*Full public liability - Certified Arborist  
Free Estimates and Advice*



[brushwoodtreeservices@gmail.com](mailto:brushwoodtreeservices@gmail.com)

**07763 844422**

## THIS SPACE COULD BE YOURS!

£175 per year, which works out at less than £15 per month.

**Advertise your business?  
Your Service?  
Your ongoing Events?**

...and support The Valley Diary to keep going into the bargain!

**Phone David on 07973 820877 or  
email [editor@valleydiary.org](mailto:editor@valleydiary.org)**

# FRED PRIMED FOR SUCCESS



**BRIGHTON ALDRIDGE  
COMMUNITY ACADEMY**

Singleton Cricket Club believes that Fred Primmer has a bright future in cricket. He is an all rounder, left-handed bat, right arm bowler. He has been involved with Hampshire from a young age and now Sussex. He plays league cricket for Hambledon 1st team and Singleton CC. He has recently joined BACA with a cricket scholarship and has already been invited to go to Kenya on a cricket tour in February 2025 with Sir Rod Aldridge Cricket Foundation. He will be playing against the U19 international team based there and coaching underprivileged children to learn the game.

Fred has a total fundraising goal of £1,800. So far, he has raised £1,000 through SCC sponsorship and fundraising activities. To make this trip of a lifetime possible, he now needs an additional £800 from donors. Fred is reaching out to the local community for support. If you would like to help Fred seize this incredible opportunity, please contact Melissa on **07391 184605** or [melissahillman@btinternet.com](mailto:melissahillman@btinternet.com)



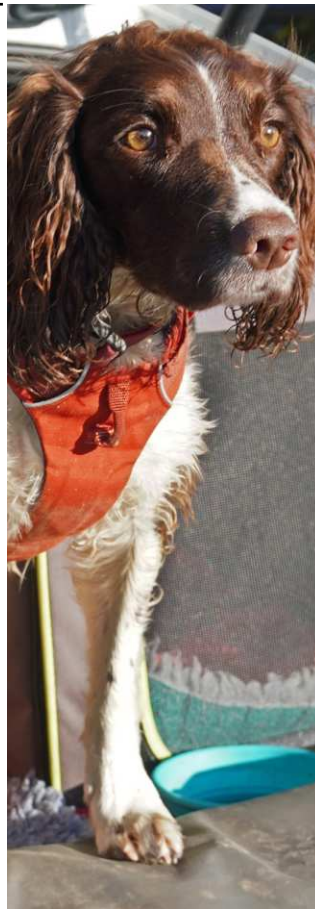
# SNIFFING OUT CRIME!

**The Lowland Rescue Search Dogs Sussex team provides qualified search and rescue dogs to respond to emergencies and to search for and recover those who are missing, vulnerable or in distress. The team support police forces across the nation by providing an emergency, on-call service 365 days a year, seven days a week.**

Search dogs use a technique called 'air scenting' to locate missing people. Humans emit a cone-shaped trail of scent as they move about which the search dogs can pick up and follow until they reach the source.

During a demonstration last month a member of the team was hiding behind a thick hedgerow on some local farmland posing as a missing person. The search dog quickly explored the surrounding fields until he located her scent, despite very windy and inhospitable conditions.

**Katy Bourne, Sussex Police & Crime Commissioner**



## ROGER GUNN

**Garden Machinery  
Sales & Service Specialist**  
Showroom & Workshop  
Located at Binderton Nr Lavant  
**Main dealers for many makes**  
**Fast reliable service**  
**Advice & Discounted machines**  
**Part exchange taken**  
**Collection & delivery offered**

See website  
[www.rogergunn.co.uk](http://www.rogergunn.co.uk)  
**01243 786003**



## East Dean VILLAGE HALL

[www.eastdeanhall.co.uk](http://www.eastdeanhall.co.uk)

*Ideal for celebrations, fitness classes, meetings, parties and wedding receptions. Can accommodate 80 standing/60 seated. Fully equipped professional kitchen, outside grass area with stunning views, car park for up to 15 cars. Disabled access.*



**FINESSE  
WOODEN  
FLOORS**



SUPPLY / INSTALL / RESTORE

Specialists in installations of new wooden floors and complete renovation, sanding and re-finishing of existing wooden floors.

M: 07939 254998

T: 01243 681066

E: [info@finessewoodenfloors.co.uk](mailto:info@finessewoodenfloors.co.uk)

[www.finessewoodenfloors.co.uk](http://www.finessewoodenfloors.co.uk)

Local, reliable and friendly service.  
Free estimates

## SIMON PATERSON

*Furniture Restoration*

Over 25 years experience  West Dean College Distinction

For confident restoration of antique furniture, clocks boule and marquetry

Phone Simon on:

**01243 811900**



# 100 CLUB

1st... Miranda Andrews, East Dean  
 2nd... Kathryn Manouch, Singleton  
 3rd... Jill Knight, West Dean

Three lucky ladies had a boost to their Christmas funds this year by sharing winnings of £105 in the last draw of the year. Many congratulations to them all.

The next draw will be on Sunday 5th January 2025 in East Dean Church.

Wishing everyone a very happy, healthy and peaceful 2025.

Wendy (811608)

Specialists in family law.  
 Helping you find the best way forward.

We are a team of specialist family lawyers and mediators providing you with support tailored to your needs. We assist clients with:

- Divorce and Separation
- Family Mediation
- Financial Issues
- Collaborative Law
- Child Arrangements
- Court Representation

01243 769001 | info@ecfamilylaw.co.uk  
 www.ecfamilylaw.co.uk



Chilgrove | Chichester | Petersfield



Nadine Duty Photography

## SUMMER'S COMING!

Another Super Gallery of Photos from our local Photographer, Nadine Duty, with thoughts of the coming year, sun and summer ahead! Nadine lives in East Dean and loves to photograph wildlife, landscapes, travel, commercial, lifestyle and family.

[nadinedutyphotographer.co.uk](http://nadinedutyphotographer.co.uk)



Nadine Duty Photography



Nadine Duty Photography



Nadine Duty Photography

### Mobile Private GP

Membership or pay as you go  
 Emphasis on face to face care  
 All adult and child general practice services

➕ Appointments usually within 24 hours  
 ➕ At home or in our clinic  
 ➕ Full range of investigations, referrals, prescriptions

Tel: 01730 202345

Email: [contact@lislemedical.com](mailto:contact@lislemedical.com)

[www.lislemedical.com](http://www.lislemedical.com)



## TRACTOR PARADE

...with over 100 decorated tractors driving around outskirts of Chichester! *Photos by HG.*



**WE HAVE RUN OUT OF EXCUSES, SO IS IT FINALLY TIME TO MOVE?**

**Now that the quartet of economic shocks in the UK have been written into the history books, namely Brexit, the pandemic, the General Election, and the UK Budget, we seem to have run out of excuses not to buy or sell our properties in 2025.**

There have been countless financial shocks that have caused hesitation and procrastination to so many property owners, when it comes to our decisions about moving home. Have we all been living in the wrong house for so many years, either because it's too small, too big, in the wrong location, or we are just waiting for "a better" time to move?

How many hypothetical house movers spend countless hours, days and months viewing properties on portals just to see what's out there, only to stop and then not act, even if they've found somewhere that could be just the answer to their residential situation?

The time to open a new door and to close an old one is quite likely to be this year, as now there doesn't seem to be any viable justification to delay. Mortgage rates are higher than two years ago, but mortgage costs as a proportion of income has fallen in the last 12 months and buyers have more certainty about what they will have to pay. At present, stock levels are reasonably good and likely to get better during the spring, and buyer competition isn't too fierce. Therefore, agreeing terms can be far more straight forward, as there is an air of stability which brings with it confidence.

A Labour government is now in place and the Budget is out of the way, so there shouldn't be any more political surprises for a while. Therefore, knowledge of what everyone has to pay in the home buying and selling process is clear.

Will 2025 be your year and have you run out of excuses to sell or to buy?

**Jennie Hancock**  
***propertyacquisitions.co.uk***

## Foodbank are the Real Winners

**The December quiz at East Dean's Star and Garter saw the pub packed with every table taken and extra chairs having to be brought in from the patio. Seven teams took part in a keenly fought contest which featured one unprecedented first – We Don't Know got a clean sweep (10 points) on the round they played their Joker on, thus getting 20 points and putting themselves in the lead at half way when we broke for supper.**



Unfortunately for them they were edged into third place during the second half (but only by two and a half points) finishing with 70 against the Red Noses on 71.5 with Mya's Mates winning for the third time in a row on 72.5. Guest rounds were contributed by Jon Bailie (Music and Geography) Clive Jackson (Who Said That?) and Henry Potter posing 10 questions on the sporting history of Goodwood. Who knew that the rules of horse racing were first laid down by the Fifth Duke of Richmond and Lord George Bentinck? Well you do now, so you can slip it into conversations whenever you get the chance. All your friends will be really impressed, probably.

Several people had kindly donated raffle prizes and even better everybody bought the tickets and that, together with a generous donation from the entry fees meant that we raised the astonishing sum of £617 for Chichester District Foodbank. We also had a number of actual food items donated, which at first confused me – a Fray Bentos steak and kidney pie seemed an odd raffle prize, a tin of baked beans even more so! But once we'd worked out what had happened it all made sense and both the money and the food were gratefully received at the Foodbank's new donation hub on Quarry Lane industrial estate. In a further act of generosity Mya's Mates donated their first prize (£60.00) to the charity as well, making an actual total of £677! Supporting the Foodbank is important at any time of year, but particularly now. Donations tend to peak around Christmas, then drop off sharply in January. So the money we raised last Sunday night will be sorely needed to buy the basics of life in the first month of the new year.

The next quiz will be on Sunday 19th January, in aid of Chichester Hygiene Bank, a similar charity to the Foodbank but providing the basic items (soap, toothpaste, shaving foam, sanitary protection etc) that people need to keep themselves together and feel that they are presentable when applying for jobs or housing, which is half the battle when life has knocked you down and you're trying to get up again. I hope you'll be able to join us then, and if you get any Christmas presents that you don't want but think would make good raffle prizes please drop them off to me at Candlemas, Chapel Row, East Dean.

Merry Christmas and Happy New Year! **Tim Weeks**

## FIRST LEAGUE WIN ELUDES THE DEAN

**The boys have had a difficult November and December, some injuries and lack of availability has again hit the squad - and we are still in search for our first league win.**

We picked up a point against Newtown Villa in blustery conditions in Bognor with Marvin Lawrence scoring twice. We also had a Narrow 1-3 defeat to a revitalised East Preston in the League - in which, again, Marvin Lawrence scored The Dean's only goal. We then hosted Stedham with a depleted squad and were easily beaten 6-1. Ben Pett put us in front when he followed up a free kick from Zane Williams that the keeper parried, but we went in 2-1 down at the break and overpowered in the end.

So yes, it's been a difficult start in this much stronger league than last season and we've is not been helped with lack of numbers and losing some key players to injuries. Manager Jason Houghton is hoping to get some players back after the festive break in order to look for a little more reliability than he has with the current squad, to help us push up the league table. We'd like to wish all readers of The Valley Diary a Happy New Year. (Photo: new signing Chris Welburn receiving his man of the Match award from Tim Calloway after the Stedham game.) **Peter Kearvell, General Manager**



**The ladies of the Singleton and East Dean WI met for the final time this year, on Thursday 12th December, in Singleton Village Hall. Our Christmas party was complimented by the fabulous decorations and tree already in situ. The tables were dressed in festive green, each with a beautiful table centre provided by our lovely committee members. Everyone brought a plate of something delicious which we all shared, and the fizz was chilled and ready to be served as our ladies arrived.**

Every WI member brought a small, wrapped present, which had a budget of no more than £5, encouraging everyone to shop sustainably and source from charity shops or recycle. These were distributed randomly around the place settings and there were some fabulous presents given; cookbooks, cushions, scarves and a very sparkly evening bag. We were delighted to welcome some new ladies on the evening and continue to grow from strength to strength in numbers, with other women from the local area already asking about coming to the January meeting.

January's meeting is on the 16th at 7pm at Singleton Village Hall and we will have a speaker from the Hygiene Bank come to explain everything they do and why it is a vital service. As ever, let me know if you would like to know more. But for now, we wish you all love and luck for 2025. **Zoe Mann, zk.mann@icloud.com**

## WI Report





**Singleton Village Hall**  
Great for all sorts of events  
Holding 50 seated or 70 standing  
Bridge Clubs, Yoga and Fitness  
Social Events, Children's Parties etc.  
Free Parking, WiFi, Chairs & Tables  
Skittle Alley and Fully Equipped Kitchen

Singleton Village Hall could be your Perfect Venue!

SingletonVillageHall.com  
bookings@SingletonVillageHall.com





**TIM JASPER**  
KITCHENS, HOME OFFICES,  
BOOKCASES AND MORE

Hand crafted in  
Goodwood since 1981



www.timjasper.co.uk 01243 774411  
info@timjasper.co.uk | The Valdoe,  
Goodwood, Chichester PO18 0PJ

# L. West & Son

## Plumbing & Heating



BATHROOMS,  
KITCHENS,  
CENTRAL HEATING,  
BOILER REPLACEMENT (GAS/OIL),  
UNDERFLOOR HEATING,  
LEADWORK,  
BOILER SERVICES,  
MAINTENANCE



New Barn, Newhouse Lane, East Dean,  
Chichester, W. Sussex PO18 0NJ

Tel: 01243 811354 or

Email: sales@lwestandson.co.uk

THE  
PERFECT  
FAMILY GIFT

# A BOOK ABOUT YOU

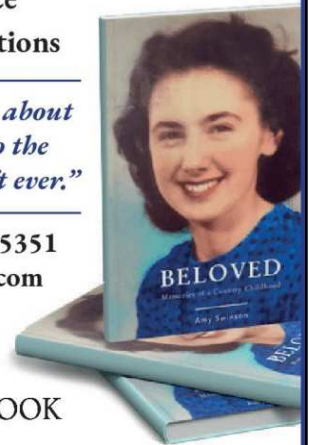


I will turn your unique life story into a beautiful book to share and enjoy with your family and friends.

- Professional biographer
- Friendly, personal service
- Short and long book options

*"Wonderful to have a book about Mum that we can pass on to the grandchildren. The best gift ever."*

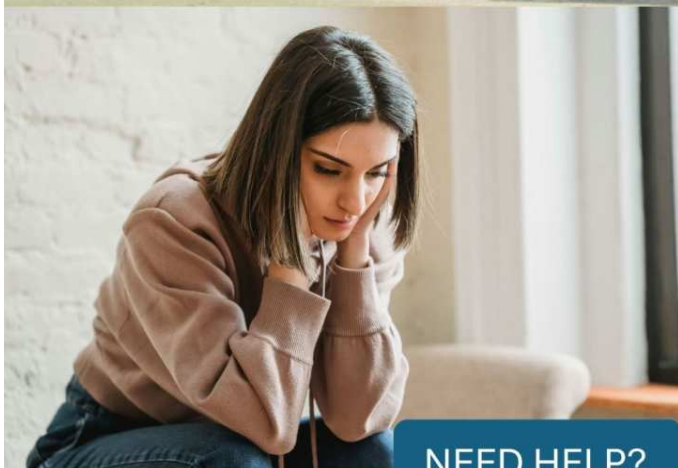
Contact Katarina 07982 465351  
katarina@lifestoryinabook.com  
www.lifestoryinabook.com



LIFE STORY  IN A BOOK

The  
Henry Smith  
Charity  
founded in 1628

Henry Smith Charity  
Singleton and Charlton  
(Charity number: 214103)



NEED HELP?

The Henry Smith Charity, founded in 1628 is one of the oldest parish grant schemes in the country. Most of these parishes are in Sussex and Surrey.

The charity seeks to help local people living in difficult circumstances with small gifts which are awarded by local trustees. Help may be given, for example, with the cost of food, fuel, white goods and furnishings. Some grants are given towards transport costs for hospital visits or doctor appointments. As well as giving grants directly to individuals, gifts may be given to small local charities or community groups providing support to people in need within the area.

To find out more about the charity please visit [www.henrysmithcharity.org.uk](http://www.henrysmithcharity.org.uk)

Any individual or group wishing to be considered for a grant should contact the trustees at [trusteehenrysmithsc@gmail.com](mailto:trusteehenrysmithsc@gmail.com)

## RESTORING BALANCE WITH SARA



- Full body balancing
- Chakra balancing
- Relaxation session
- Indian head massage
- Facial rejuvenation massage
- Food testing for intolerances
- Menopause support
- Clearing fears and phobias
- Supporting digestive issues
- Sleep support
- Nutrition support

Hand blended organic body & bath oils  
(perfect Christmas gifts)

For more information please head to my website  
[www.kinesiologylife.co.uk](http://www.kinesiologylife.co.uk)  
or call me on 07887 775502  
I'm based in East Dean



# hancock

Lettings & Estate Agents

## Make yourself at home

Buy, sell or let with an independent estate agent – established since 1991

Lettings 01243 531111  
Sales 01243 531155

office@hancockpartners.co.uk  
Hancock and Partners  
5 Northgate, Chichester PO19 1BA

## THE FOX GOES FREE



Thank you for your continued support and we look forward to seeing everyone in 2025!

### GREAT NEWS

You can now reserve a table via our website. Or if you want to treat a loved one to dinner or a stay in one of our lovely rooms, you can now purchase vouchers online too!

### FOX CLAY SHOOTS 2025

Filling fast – January 18th  
15th February & 22nd March

[www.thefoxgoesfree.com](http://www.thefoxgoesfree.com)

**01243 811461**

## MacDonald Oates **LLP** SOLICITORS



Residential Property  
Family Law  
Mediation Services  
Wills, Probate & Trusts  
Litigation & Dispute Resolution  
Employment Law  
Company & Commercial  
Commercial Property

### Leading Client Service

#### Petersfield Office

Tel: 01730 268211 | Fax: 01730 261232

#### Midhurst Office

Tel: 01730 816711 | Fax: 01730 816016



[www.macdonaldoates.co.uk](http://www.macdonaldoates.co.uk)



## Wine Tasting and Trivia Evening with Hennings Wine at Arundel Town Hall

Friday 14th March 2025  
at 7pm



*Gather a team of friends, put your tastebuds together and join us a night of vinous fun! Tickets are for two people – £55 per couple. To book your tickets visit [thesussexsnowdroptrust.com](http://thesussexsnowdroptrust.com)*

# 2025



# Tod Anstee

Property Consultants

## 01243 523723

The Old Coach House, 14 West Pallant,  
Chichester, West Sussex PO19 1TB

chichester@todanstee.com

todanstee.com



## Connecting People and Property since 2009

With a wealth of local knowledge, dedicated team,  
and strong connections across West Sussex,  
contact Tod Anstee for exceptional property advice.

Residential and Commercial Sales

Lettings & Property Management | Rural Estate Management

Country Houses | Land and New Homes



# Valley Gardening Club

## HAPPY NEW YEAR EVERYONE!

Our **Christmas Coffee & Sherry Morning** started very tentatively. The wind was howling at 60mph plus and the electricity went down! The only solution was to light a few candles and some camping stoves and open the Sherry! Quite soon a little crowd had bravely gathered and the huddle of cheery folk eating mince pies and sausage rolls created a warm and festive atmosphere.

**Vicky Mudford**, our Gardening Club Chair, sadly, but very deservedly after many years of service, announced she is stepping down later this year. She has worked tirelessly at keeping the engines rolling for all of our events. No mean feat and we thank her profusely for all her cheerful willingness over the years and will miss her hugely. If anyone is interested in joining the VGC Committee, and perhaps even, interested in chairing the Committee at some point, do get in touch. Vicky is happy to work closely with someone else to show them the ropes.

The celebrations are now all over and it's time for rest and recuperation. It's hard to ditch the lovely Christmas wreath I made at Singleton Village Hall but the feeling of a fresh start is welcome. The only job in my garden is to mulch, mulch, mulch and give that soil the best nourishment for the year ahead.

**Miranda Mayne**

### Dates for your Calendar

**Horticultural Quiz with Potluck Supper** is on Thursday 6th March at East Dean Village Hall, our **Spring Show** is on Saturday 29th March at Singleton Village Hall, the **Bacon and Bap and Plant Sale etc.** is on Monday 28th April at East Dean Village Hall and our **Annual Show** is on Saturday 9th August at East Dean Village Hall.

## TWO POEMS FROM FRANCIS FOR THE PRICE OF ONE!

### Sport Retort

He talked about test cricket,  
And footie with another nation.  
She glared at the tv screen shouting,  
"Two match information!"

### That's My Girl

Wearing her Sainsbury's shirt,  
Through the store she strode.  
Doing her weekly shop she was,  
At Lidl's up the road.



## MAKE YOUR MARK

Painters, poets, weavers, welders, gardeners,  
gilders, calligraphers, conservators...

Whatever your craft, whatever your level there  
is a course for you. Learn from expert tutors in  
inspirational surroundings at West Dean.



Book your course today.

[westdean.ac.uk](http://westdean.ac.uk)

# WEST DEAN



COLLEGE OF ART, DESIGN, CRAFT AND CONSERVATION